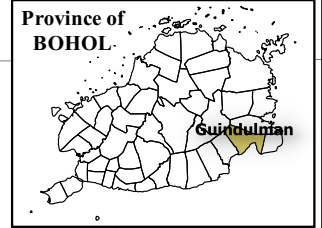


124°23'0" 124°25'0" 124°27'0" 124°29'0" 124°31'0"



Republic of the Philippines  
PROVINCE OF BOHOL  
City of Tagbilaran



**PROVINCIAL PLANNING AND  
DEVELOPMENT OFFICE**

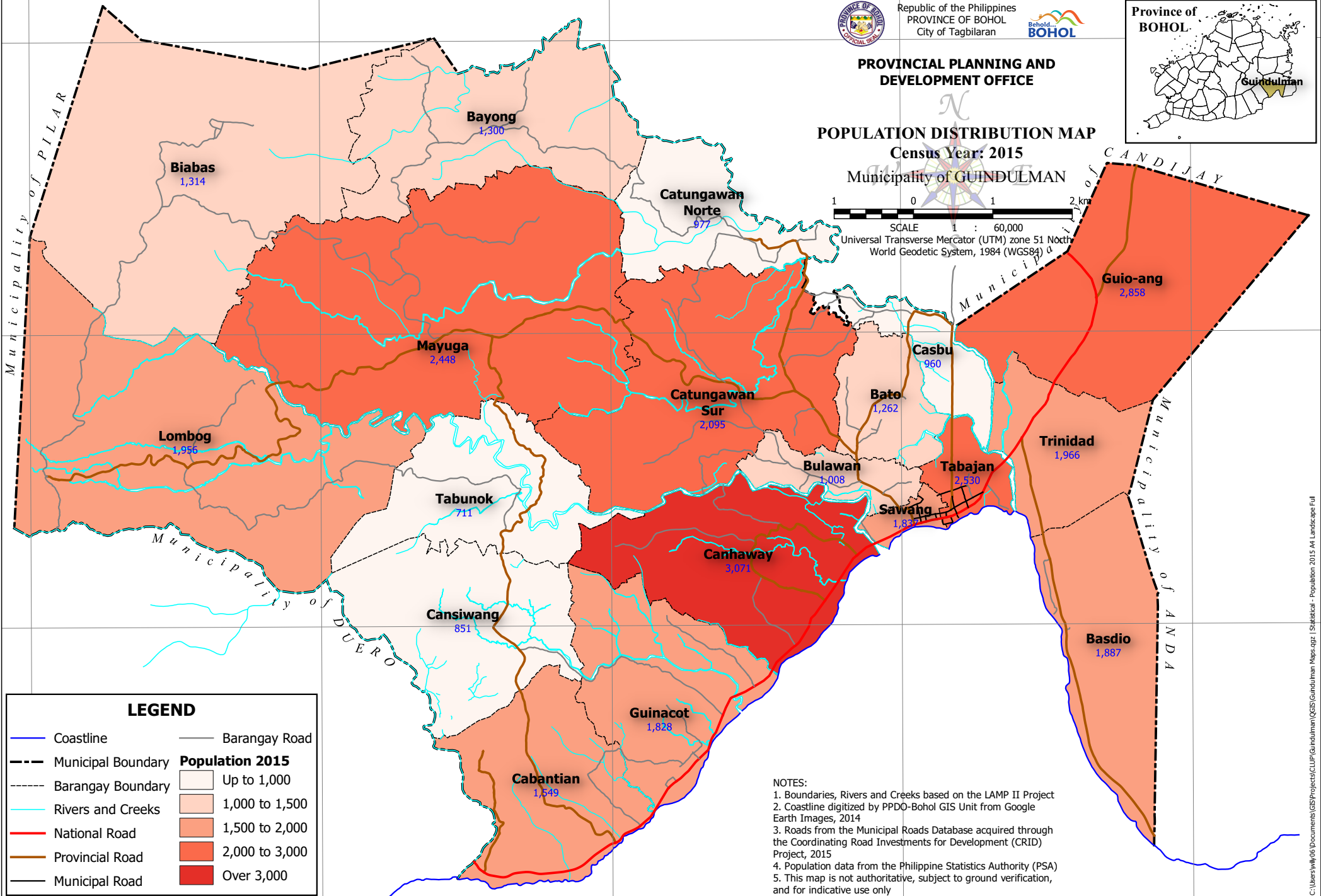
**POPULATION DISTRIBUTION MAP**

**Census Year: 2015**

Municipality of **GUINDULMAN**



SCALE 1 : 60,000  
Universal Transverse Mercator (UTM) zone 51 North  
World Geodetic System, 1984 (WGS84)



**LEGEND**

Coastline	Barangay Road
Municipal Boundary	<b>Population 2015</b>
Barangay Boundary	Up to 1,000
Rivers and Creeks	1,000 to 1,500
National Road	1,500 to 2,000
Provincial Road	2,000 to 3,000
Municipal Road	Over 3,000

**NOTES:**

1. Boundaries, Rivers and Creeks based on the LAMP II Project
2. Coastline digitized by PPDO-Bohol GIS Unit from Google Earth Images, 2014
3. Roads from the Municipal Roads Database acquired through the Coordinating Road Investments for Development (CRID) Project, 2015
4. Population data from the Philippine Statistics Authority (PSA)
5. This map is not authoritative, subject to ground verification, and for indicative use only

124°23'0" 124°25'0" 124°27'0" 124°29'0" 124°31'0"